

Stay Safe  Stay Apart



Important Information

# Back to School Travel



Valid from August 2020



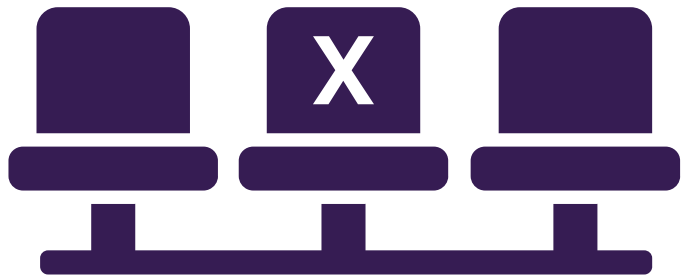
West  
Midlands  
Network

# Travelling will be different

Travelling back to school or college this September will be different with social distancing measures in place. We are here to help you navigate your way through the latest government advice on travel and to help you plan ahead.



All buses, trains and trams will be out on the network, ensuring that you can get to and from school or college, but with reduced capacity.



Keeping you and your family safe is our priority so we've upped cleaning on board and have added measures to support social distancing.

# Keeping you and your family safe

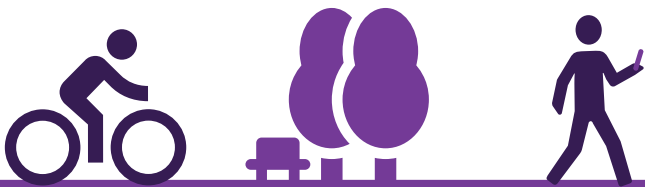


Capacity on public transport has been reduced in order to support social distancing. This may mean that there is a wait for some services at busier times, so allow extra time for your journey.

Face coverings are required in all transport hubs and on board for anyone over 11 years old, except those exempt with a medical or health condition.

You can find out more about this here:

[wmnetwork.co.uk/facecovering](http://wmnetwork.co.uk/facecovering)



## Try something different

Where possible, consider cycling or walking to school or college. Not only is cycling and walking the best way to stay active, it helps cut delays around schools and keeps space available on buses, trains and trams for those who have no other option or are travelling further.

There are a number of cycling and walking schemes in or being put in place. Check to see if there are any on your route to school on our web links on the reverse of this leaflet.

If you plan to drive, consider parking or dropping off a few streets away from the school gates and walk the short distance. This saves you being stuck in traffic and keeps the roads safer around the school, reducing the chance of collisions or injuries.

When using the bus, train or tram, be kind, be patient and stay safe. We are doing everything we can to keep you moving. Where services are busy allow more time and consider changing the route you take by using the West Midlands journey planner and app.

For updates and more information on Back to School Travel, visit our dedicated web page:

[wmnetwork.co.uk/schooltravel](https://wmnetwork.co.uk/schooltravel)

Our website has the latest information on bus, train and tram services, our journey planner, guidance on social distancing and ticket options. Download our app for real time information, journey planning and travel alerts on the move. Just search Network West Midlands in your app store.

---

Live updates are available at:  
[wmnetwork.co.uk/disruptions](https://wmnetwork.co.uk/disruptions)

---

Find more information about active travel here:  
[wmnetwork.co.uk/cycling](https://wmnetwork.co.uk/cycling)

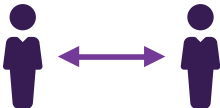
---

Be social or get in touch at:

 [@WMNetwork](https://twitter.com/WMNetwork)

 [WestMidlandsNetwork](https://www.facebook.com/WestMidlandsNetwork)

---

**Stay Safe**  **Stay Apart**



Plan your journey and work out the best fare at:  
[wmnetwork.co.uk](https://wmnetwork.co.uk)

Or telephone Traveline on 0871 200 220 33 for bus and Metro information, calls cost 12p per minute plus your phone company's access charge.